

When choosing your walk-in floor consider traffic volume, durability, ease of cleaning, as well as application requirements to deliver lasting floor performance. This AmeriKooler floor selection guide will help you choose a floor that best fits your needs.

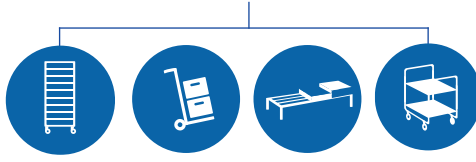
## Floor Application Guide

### 1. Standard Floor



600 / 700 / 850  
Lbs. per sq. ft.

### 2. Reinforced Floor



850  
Lbs. per sq. ft.

1200  
Lbs. per sq. ft.

1500  
Lbs. per sq. ft.

1500  
Lbs. per sq. ft.

### 3. Reinforced Floor with Overlay



1500  
Lbs. per sq. ft.

1700 / 1800  
Lbs. per sq. ft.

### 4. The Ultimate Floor



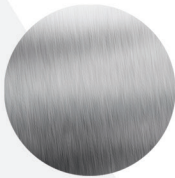
2600  
Lbs. per sq. ft.

## AmeriKooler Floor Finishes



### .050 SMOOTH ALUMINUM

Floor finish with a 1/2"-radius NSF cove along the interior walk-in perimeter. This floor is rated to support **600 pounds** per-square-foot (PSF) of uniformly distributed load. **Foot traffic applications.**



### 22 GAUGE SMOOTH STAINLESS STEEL

Floor finish with 1/2"-radius NSF cove along the interior walk-in perimeter. This floor offers greater resistance to wear and improves load bearing strength and is rated to support **700 PSF** of uniformly distributed load. Stainless steel is a sanitary metal finish that is easier to clean and maintain.



### 22 GAUGE TEXTURED STAINLESS STEEL

A stronger alternative to a smooth stainless steel floor finish with 1/2"-radius NSF cove along the interior walk-in perimeter. The textured stainless steel finish offers greater resistance to scratches and conceals daily wear and tear. Due to low textured profile, carts are easier to push on this floor finish. It also provides greater foot traffic traction and is easy to clean. Rated to support **850 PSF** of uniformly distributed load.



### .090 ALUMINUM DIAMOND TREAD PLATE - OVERLAY SHEETS

We recommend aluminum diamond tread plate floor overlay for heavy duty applications. This floor significantly increases resistance to wear. We ship pre-cut overlay sheets that are field installed on an existing floor, overlapping floor panel joints. Overlay sheets increase load bearing capacity by **500 PSF** of uniformly distributed load.

## 1. Standard Floor

Suitable for everyday foot traffic applications and a great choice for small compartment walk-ins. Our standard 22 gauge smooth stainless steel floor finish is rated at 700 pounds per-square-foot (PSF) of uniformly distributed load.

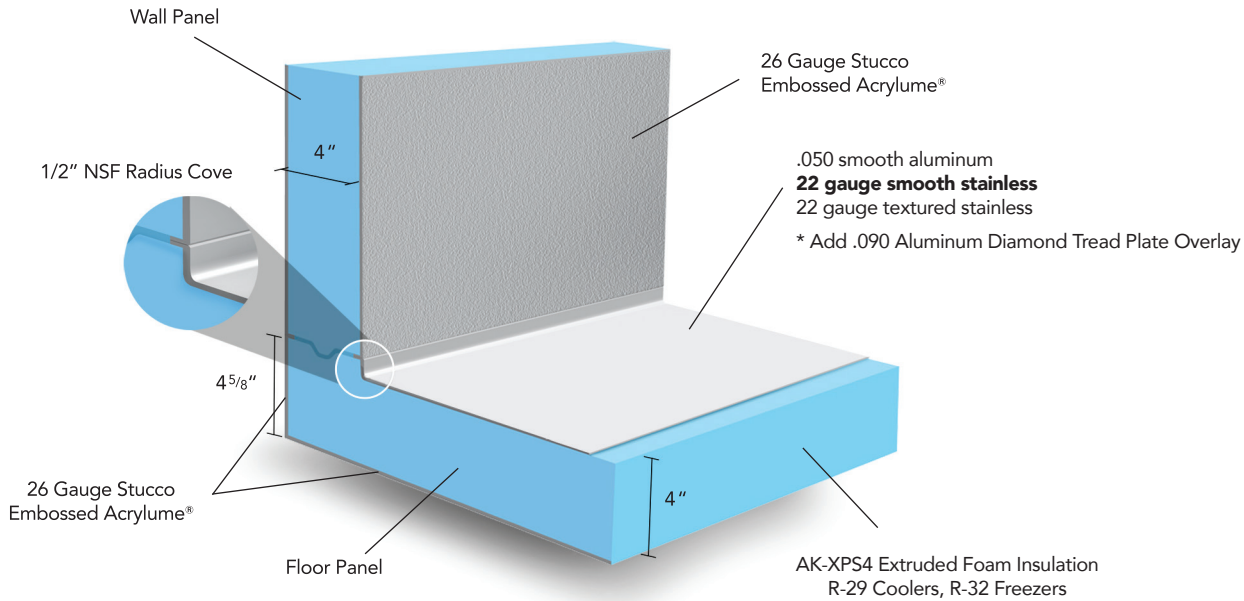


Figure 1. Side cut Standard floor view



FOOT TRAFFIC

## 2. Reinforced Floor

Suitable for Pan Rolling Racks, Hand Trucks, Dunnage Racks and Log Carts. With smooth aluminum finish rated at 1200 PSF; 1300 PSF with smooth stainless steel; or 1500 PSF of uniformly distributed load with textured stainless steel.

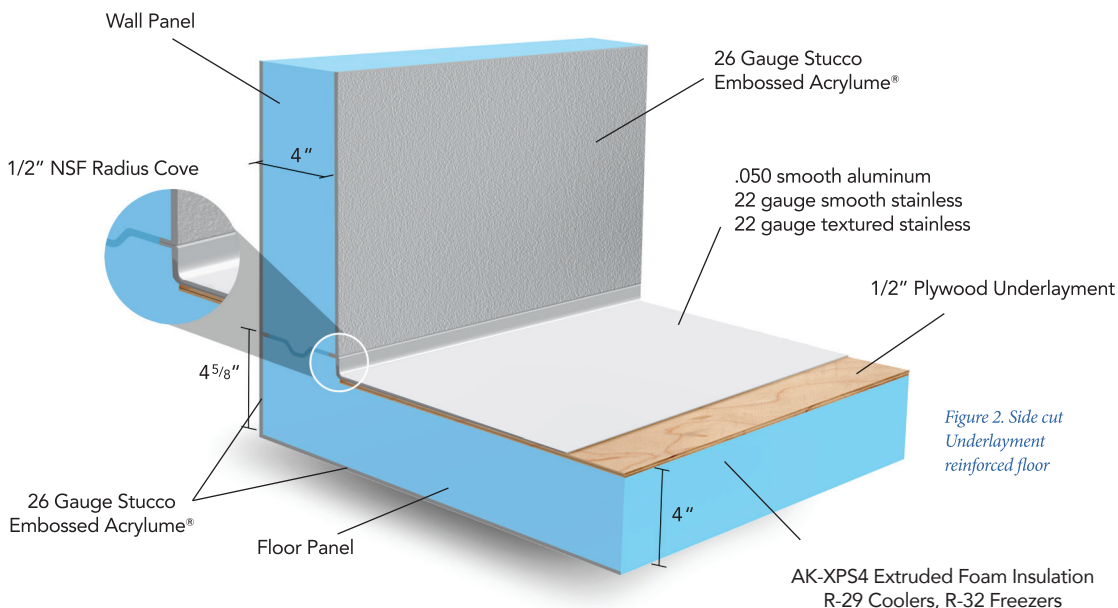


Figure 2. Side cut Underlayment reinforced floor



PAN ROLLING RACKS



HAND TRUCKS



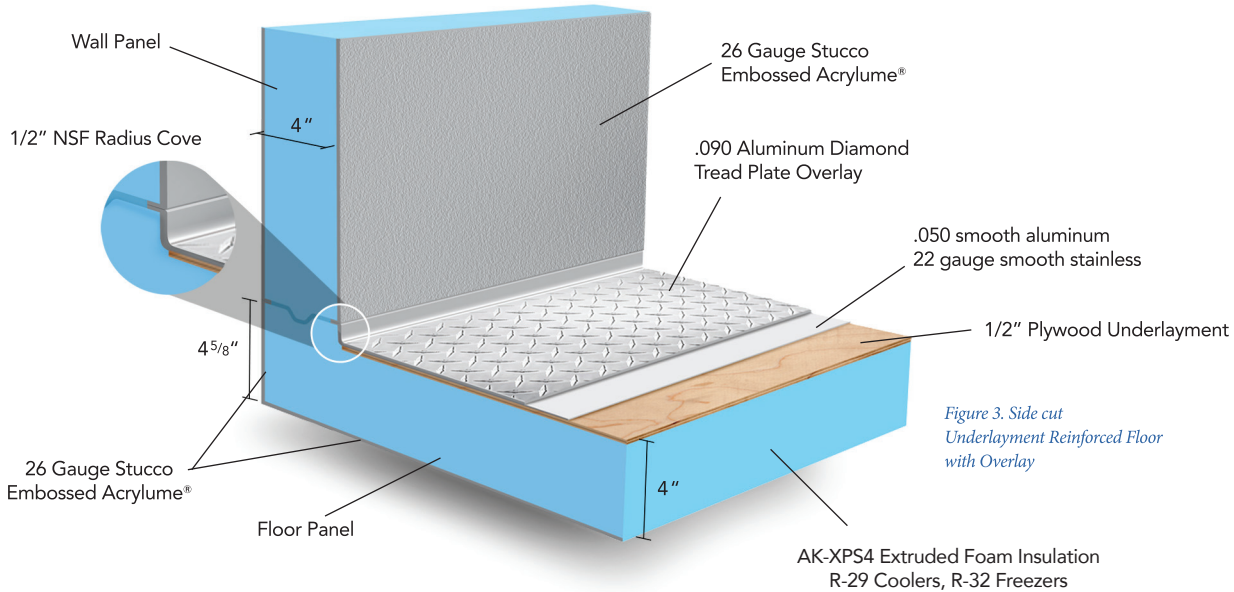
DUNNAGE RACKS



LOG CARTS

### 3. Reinforced Floor with Overlay

This reinforced floor with overlayment offers more even spread of weight across entire floor. This floor is suitable for Hand Trucks, Dunnage Racks, Beer Keg Carts, Log Carts and Dollie Carts. Rated at 1700 PSF with smooth aluminum finish; and 1800 PSF of evenly distributed load with smooth stainless steel.



HAND TRUCKS



DUNNAGE RACKS



LOG CARTS



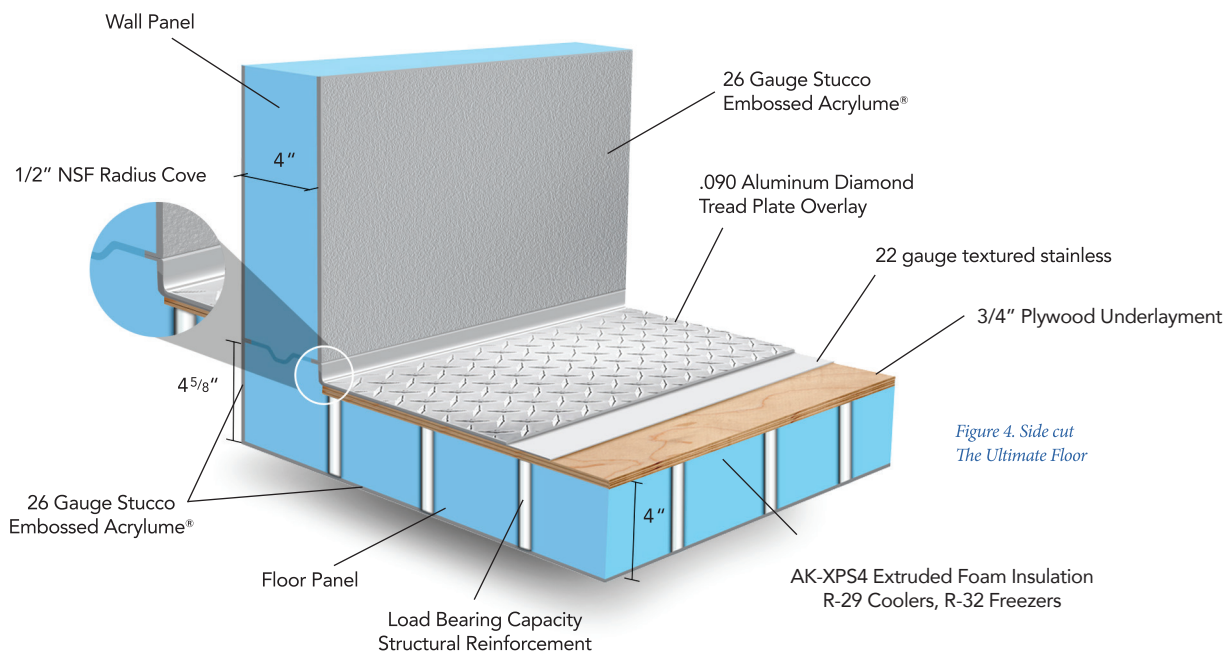
BEER KEG CARTS



DOLLIE CARTS

### 4. The Ultimate Floor

The AmeriKooler ultimate reinforced floor is suitable for Hand Pallet Jack applications. It is rated at 2600 PSF of evenly distributed load with textured stainless steel finish.



DOLLIE CARTS



HAND PALLET JACK

## Floor Construction Features

### All floor panels consist of:

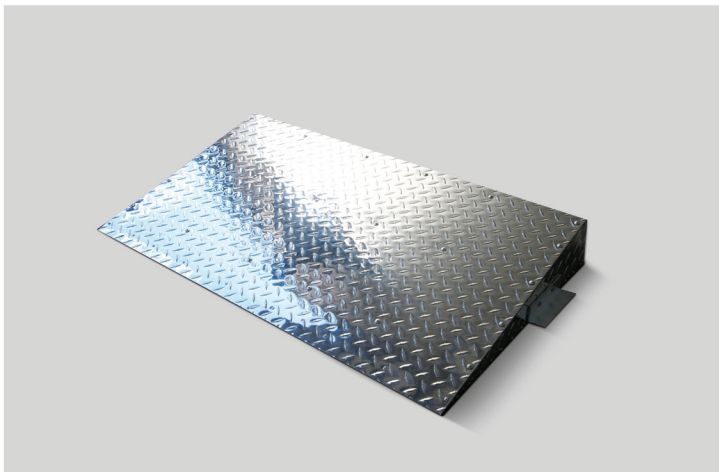
- Exterior metal skins: durable, corrosion-resistant Acrylume®
- Floor panels (4" thick) shall have 1/2" radius cove at interior perimeter, to facilitate cleaning
- 4" of extruded Polystyrene foam insulation (XPS) with uniform density
- Finished panels have no low insulating tongue-and-groove perimeter framing
- Assembly with corrosion resistant cam-action locking devices
- All panels connect with tongue-and-groove of the same XPS panel core insulation
- NSF approved compression gaskets applied to tongue side of all panels (interior and exterior) to form **airtight** vapor-proof joints\*
- Access to locking devices via interior of panels
- PVC press-fit caps provided to seal 3/8" diameter hex-wrench ports, after assembly is completed
- Panel lamination process provides for a structurally solid and reliable panel
- Specifications are subject to change without notice due to our continuous product improvements

## Maintenance Guidelines

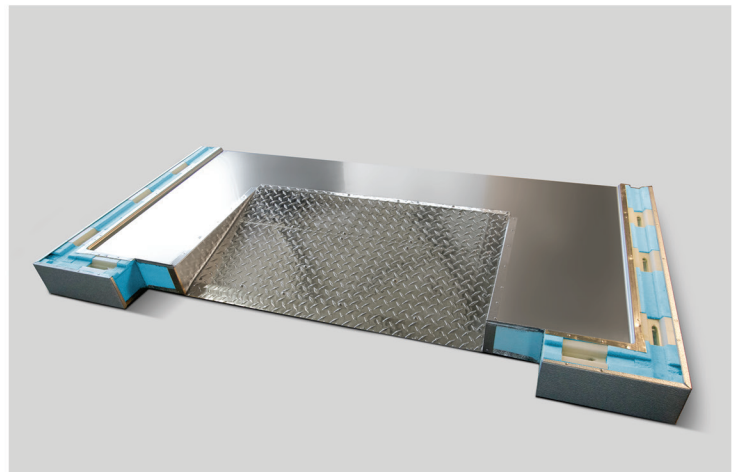
We recommend cleaning walk-in floors with a damp mop. Use of excess or pooling water will void warranty\*.

May 2018

## Popular Ramp Options



Exterior Ramp



Interior Ramp

Standard sizes: 24" deep for 26", 30" and 36" wide door opening.



National Sanitation  
Foundation



Underwriters  
Laboratory



City of Houston



City of New York-MEA



State of Oregon



EISA  
Compliant



DOE R-Value  
Compliant



Miami-Dade County  
#17-0802.12



State of Florida  
#FL22413